



**PERFORMANCE DRIFT TRIKES**



## TRIAD TRIKE-UNDERWORLD 3 OWNERS MANUAL & ASSEMBLY INSTRUCTIONS

### **⚠ WARNING:**

**THIS MANUAL CONTAINS IMPORTANT SAFETY, ASSEMBLY AND MAINTENANCE INFORMATION. Keep this manual for future reference.**

**ASSEMBLY MUST BE COMPLETED BY AN ADULT.** Obtain the required tools and then follow the assembly instructions in this manual. If you do not have the required tools, or have troubles understanding the instructions, we recommend that you seek assistance by an experienced bicycle mechanic.

**FAILURE TO FOLLOW THESE INSTRUCTIONS MAY CAUSE SERIOUS INJURY.**

## SAFETY INFORMATION

### **⚠ WARNING:**

- Assembly of this product must be carried out by an adult. Direct adult supervision required.
- Please ensure you follow the assembly instructions, as some parts must be installed before others.
- Not suitable for children under 13 years, contains small parts.
- Always wear an approved safety helmet when riding.
- Always wear fully enclosed shoes.
- Not permitted for use on public roads or highways.
- Use the toy only on flat surfaces, such as private property, outdoor sporting areas.
- Do not ride near motor vehicles.
- Do not ride at night. Do not use on wet surfaces.
- It is not recommended that trike is used at high speed.
- Always check brakes before riding.
- Do not touch the rear wheel while sliding.
- Avoid sharp bumps, drainage grates and sudden surface changes.
- Never ride with more than one person on the product.
- Always follow local traffic laws.
- The product must be used with caution since skill is required to avoid falls or collisions causing injury to the user and the third parties.
- Read all information supplied by the manufacturer before riding.
- **THE MAXIMUM WEIGHT LIMIT FOR THIS PRODUCT IS 100KGS/222LBS.**
- Check and secure all fasteners before every ride.
- Replace worn and broken parts immediately.
- Adult assembly required.

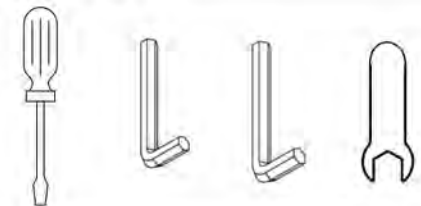
## TRIAD DRIFT TRIKES SUPPORT

Thanks for purchasing this product.  
Check out the website [www.triaddrifttrikes.com](http://www.triaddrifttrikes.com)  
for the distributor information in your region.



## REQUIRED TOOLS

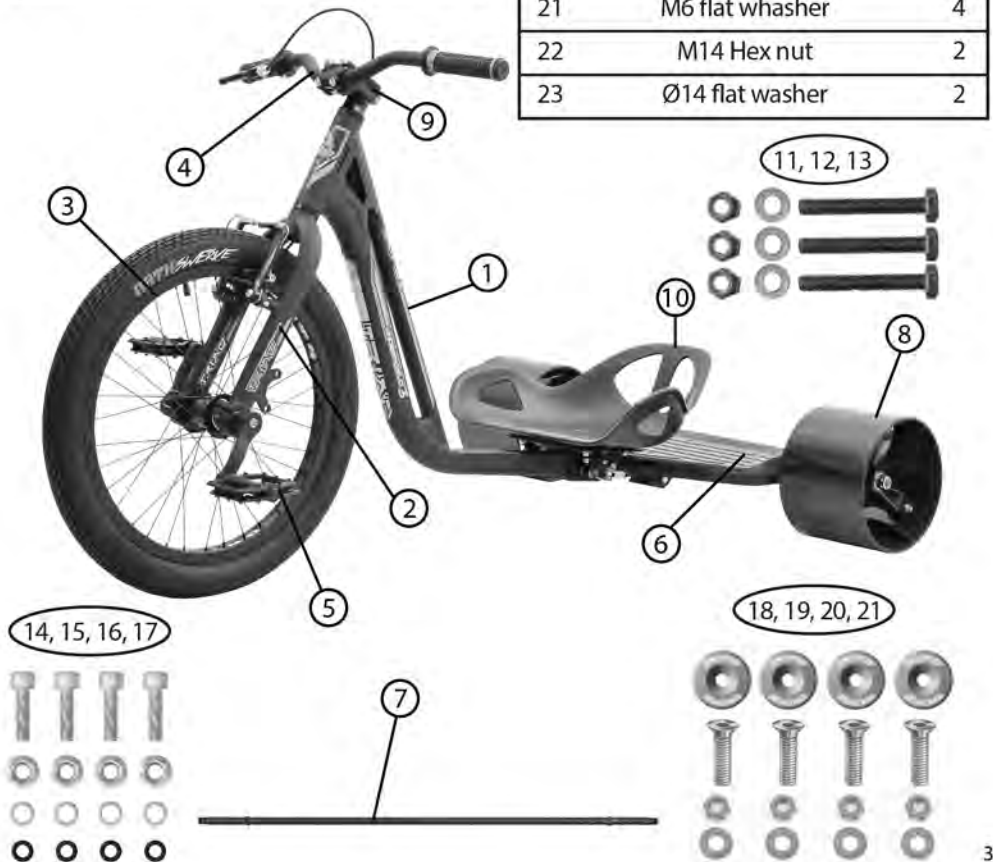
- 5 mm Allen key
- 10 mm wrench
- 2 x 13 mm wrench
- 15 mm Pedal wrench
- 22 mm wrench
- Phillips Head Screwdriver



## PARTS LIST & EXPLODED DIAGRAM

No.	Description	Qty
1	Main frame	1
2	Front fork	1
3	Front wheel	1
4	Handlebar	1
5	Pedals (R/L)	2
6	Rear frame with platform	1
7	Rear axle	1
8	Rear wheels	2
9	Stem	1
10	Seat	1

No.	Description	Qty
11	M8x58mm bolt	3
12	M8 Hex nut	3
13	M8 flat washer	3
14	M6 x 20mm Allen bolt	4
15	M6 Flange nut	4
16	Coil spring washer	4
17	Rubber O ring	4
18	Alloy seat bushing	4
19	M6x28mm countersunk bolt	4
20	M6 Hex nut	4
21	M6 flat washer	4
22	M14 Hex nut	2
23	Ø14 flat washer	2



## ASSEMBLY INSTRUCTIONS

### 1. Frame assembly

Attach the rear frame (No.6) to main frame ( No.1). Secure with three M8x58mm bolts, M8 hex nut (No.12) and M8 washer (No.13).



### 2. Front wheel set assembly

Slide the front wheel (No.3) to fork (No.2), then secure with four M6x20mm bolt (No.14), coil spring washer(No.16), rubber O ring(No.17) and M6 nut (No. 15).



#### CAUTION:

Check to confirm tyre rotation indicator arrow is facing the correct direction.  
Check wheel is fitted in the correct direction so hub engagement is forward driving.

### 3. Rear wheel assembly

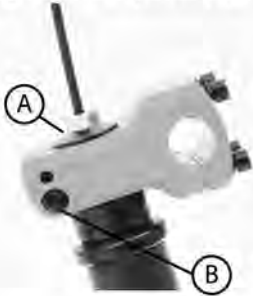
Slide one rear wheel (No.8) onto the rear axle (No.7), then secure with one washer and M14 nut (No.22). Repeat for the second wheel.



## ASSEMBLY INSTRUCTIONS

### 4. Stem assembly

The stem is pre-assembled. If necessary, rotate the stem and fork to face the forward position. Ensure the stem is aligned with the front fork and facing the correct direction. Tighten the top bolt (A) of the stem and the stem bolts (B).



#### **WARNING:**

If the handlebar clamp is not tight enough, the handlebar can slip in the stem. This can cause damage to the handlebar or stem, and can cause loss of control.

### 5. Handle bar assembly

Loosen the bolts of the stem and insert the handlebar (No.4) into the stem clamp and secure by tightening the four allen bolts with 6mm allen key. Ensure the bolts are tightened evenly.



### 6. Test the tightness of the stem bolt and handlebar clamp

Brace the front wheel between your knees and try to move the handlebars up and down and from side to side. The handlebars are secure within the stem and the stem on the fork steering tube if no movement is detected when applying turning pressure.

### 7. Seat base and seat assembly

Attach the seat (No.10) to seat base and secure with M6x28mm countersunk bolts (No.19), Alloy seat bushing (No.18), M6 flat washer (No. 21) and M6 nut (No. 20).

## ASSEMBLY INSTRUCTIONS



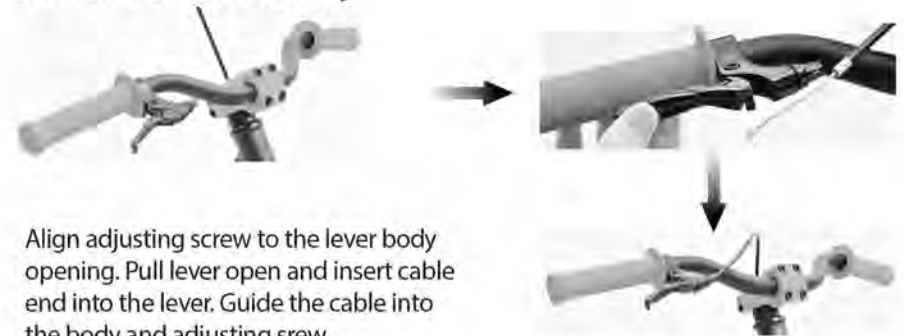
### 8. Pedal assembly

Attach the pedals (No.5) to the crank and tighten with spanner or adjustable wrench.



**CAUTION:** There is a right pedal marked "R" and a left pedal marked "L". Please ensure you assemble them on the correct side.

### 9. Brake Cable Assembly



Align adjusting screw to the lever body opening. Pull lever open and insert cable end into the lever. Guide the cable into the body and adjusting screw.

**For safe riding it is crucial that your trike's brakes function correctly**



#### **WARNING:**

This trike should never be ridden unless the brakes are working correctly. Take care when using the front brake.

## ASSEMBLY INSTRUCTIONS

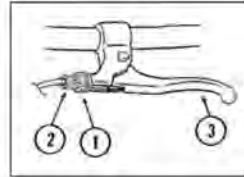
### 1. Put the brake shoes in the correct position:

- Loosen the nut (10) of each brake shoe
- Adjust each brake shoe so it is flat against the rim and aligned with the curve of the rim
- Make sure each brake shoe does not rub the tire
- If the surface of the brake shoe has arrows, make sure the arrows point toward the rear of the trike
- Hold each brake shoe in position and tighten the nut.



### 2. Test the tightness of each brake shoe:

- Try to move each brake shoe out of position
- If a brake shoe moves, do Step 1 again, but tighten the nut tighter than before
- Do this test again, until each brake shoe does not move.



### 3. Stretch the cable:

- Hold both brake shoes against the rim
- Loosen the cable clamp
- Pull the cable tight and tighten the cable clamp



### WARNING:

Do not over tighten the cable clamp. Over tightening the cable clamp may cut the cable and cause injury to the rider or to others.

- Squeeze each brake lever firmly 20 times
- Hold both brake shoes against the rim and loosen the cable clamp
- Pull the cable tight and tighten the cable clamp

## ASSEMBLY INSTRUCTIONS

### Recommended Torque

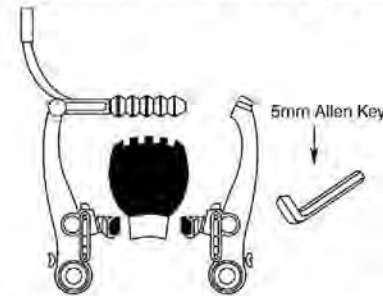
Nuts and bolts should be adjusted using a torque wrench. This helps to prevent over tightening and damage to the threads. Different torque measurements are recommended when tightening different components.

Use the following table as a guide.

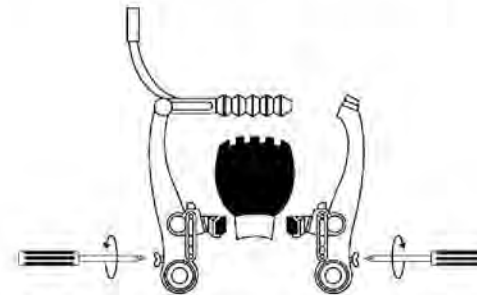
Component	Torque (N.m)	Component	Torque (N.m)
Front fork M6 bolt	6 - 10	Stem M8 bolt	18 - 22
Rear axle M14 bolt	55 - 60	Handle bar clamp M6	18 - 20
Frame M8 bolt	8 - 12	Pedal axle/spindle	30 - 35
Seat M6 bolt	4 - 6	Crank nut	28 - 30
Seat base M6 bolt	4 - 6	Rear wheel M6 bolt	9 - 11
Stem M6 bolt	8 - 12		

## ASSEMBLY INSTRUCTIONS

### Adjustment – Linear Pull Brakes



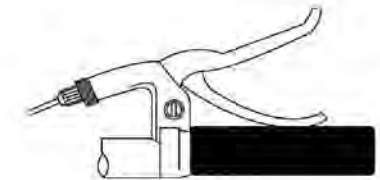
1. Fasten the shoe fixing nut while holding the shoe against the rim.



3. Alter the spring tension adjustment screws to connect the balance.



2. Thread the inner cable through the inner cable lead. When a clearance of 1mm between each brake pad and the rim is achieved, secure the cable fixing bolt.



4. Check the brake operation and shoe clearance by fully squeezing the brake lever repeatedly, (about 10 times). Loosen and then re-fasten the cable fixing bolt as per Step 3 until adjustment is correct. Make any fine alterations via the adjusting screw at the brake lever.

## CARE AND MAINTENANCE

Routine maintenance is an essential component of riding. The condition of your trike changes every time it is used, meaning more frequent maintenance is necessary the more you ride your trike. Please ensure you check all nuts and bolts are tight before each time your ride, and please check the brake before riding.



### WARNING:

Please replace all rear wheel nuts when replacing or changing the rear slicks, re-using nyloc may cause rear slick to become loose and cause damage to hub.